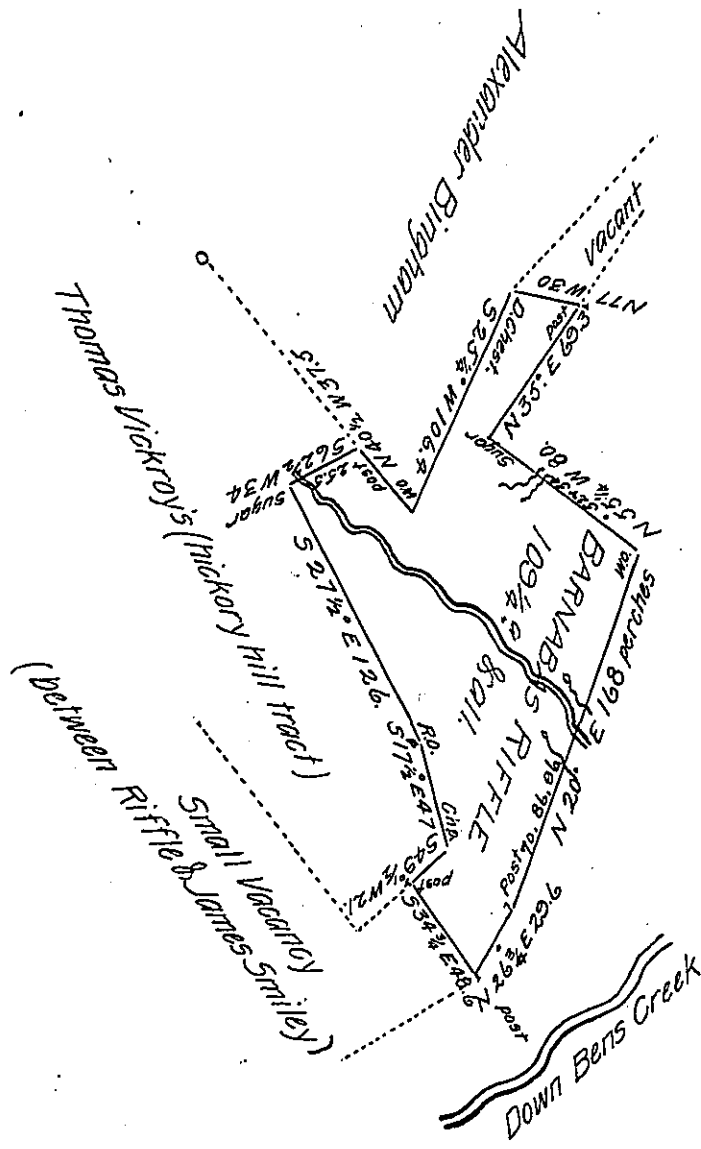


N.B. The first and only improvement upon this tract begun in November 1802, there has been grain raised & a family resided upon it a few years, the Actual residence Commenced with the improvement, It is now nonresident, but is Cropped or occupied by Barnabas Riffle. there is a Cabin & Stable & about 4 acres Cleared land

To Richard T. Leech Esq.
S. G. of Pennsylvania.

John Wells Deputy



Situate on the N. W. Side of Bens Creek, including an improvement in, now Jenner Township, formerly Quemahoning Township, Somerset County & Surveyed the 26th day of November 1814. In pursuance of a Warrant dated the 3rd day of March 1810. for 100^a

John Wells Deputy.

To Richard T. Leech Esquire }
Surveyor General of Pennsylvania }

IN TESTIMONY that the above is a copy of the original remaining on file in the Department of Internal Affairs of Pennsylvania, made conformably to an Act of Assembly approved the 16th day of February, 1833, I have hereunto set my Hand and caused the Seal of said Department to be affixed at Harrisburg, this fifteenth day of August 1906.

Geo. D. Brown
Secretary of Internal Affairs.